

# SPECIFICATION — Lite-Focus Neo

## APPLICATION

It is ideal for warehouses, workshops and other applications.

## PARAMETERS

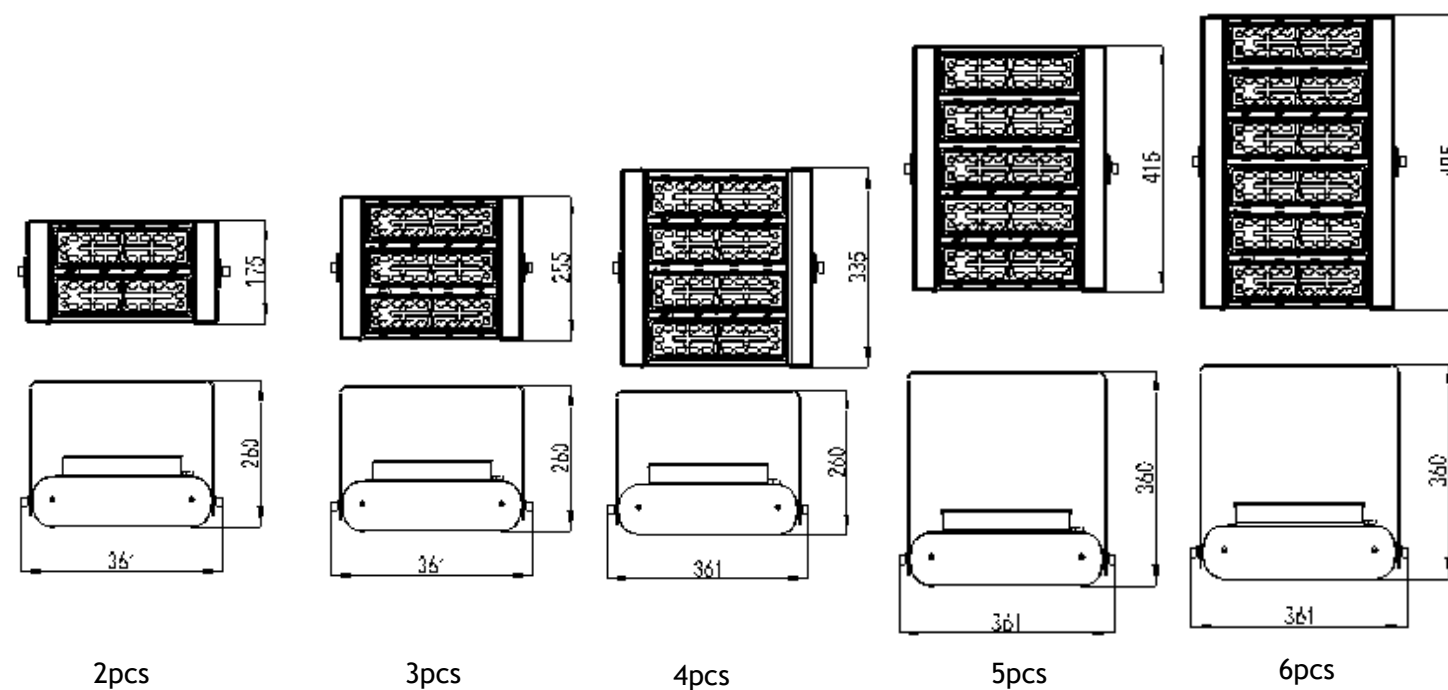
### • Physical & Performance

Chip	Samsung	Housing and Body	Aluminum Alloy
Protection class	IP68 (LED Module)	Protection class	IP67 (supply power)
Single color	3000K,4000K,5000K,5700K	System power	100-300W
CRI	Ra70C ± 5	Power efficiency	91%
Power factor	0.95	LED numbers	18pcs/per module
Lifetime	More than 50000 hrs	Operating environment	-40°C~+50 °C, 10%~90%RH
Storage environment	-40°C~+50 °C	Junction Temperature	Less than 80 °C
Supply voltage	AC176~277V; 50/60Hz	Surge voltage	10KV

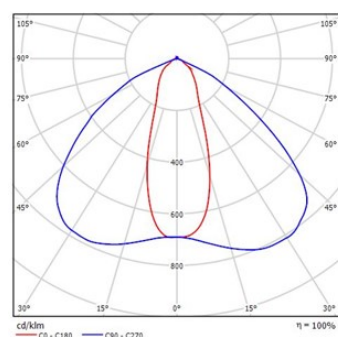
### • Main

Modules	System Power	LM/W (Ultra High)	Initial Lumens (Ultra High)	Product Size (mm)	Packaging Dimension (mm)	N.W. (kg)
2	100	110	11000	175*361*260	410*430*230	4.7
3	150	110	16500	255*361*260	450*430*230	5.5
4	200	110	22000	335*361*260	490*430*230	6.6
5	250	110	27500	415*361*260	620*430*230	9.4
6	300	110	33000	495*361*260	660*430*230	10.4

## DIMENSIONS



## DISTRIBUTION

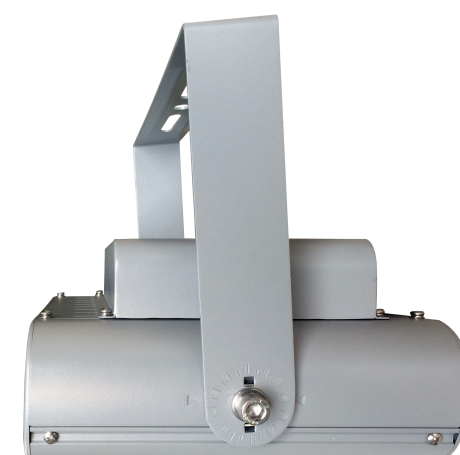


110×40°

LED OPTICS: POLYMETHYL METHACRYLATE (PMMA)

## ORDERING INFORMATION

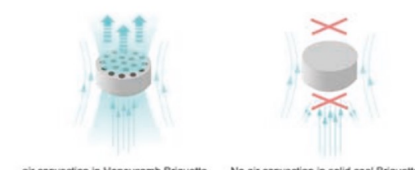
Product Family	Module	Power	CCT	Distribution	Color
LFN=Lite-Focus Neo	2	100=100w(2)			
	3	150=150w(3)	30=3000K		
	4	200=200w(4)	40=4000K		
	5	250=250w(5)	50=5000K	10=110°40°	SL=Silvery
	6	300=300w(6)	57=5700K		BK=Black



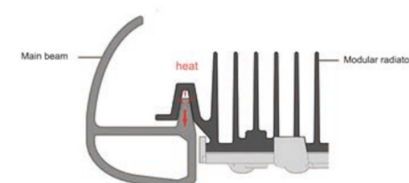
## FEATURES AND BENEFITS



Schematic diagram of heat dissipation of honeycomb effect



### Honeycomb Briquette effect



The heat is transferred to the main beam, and thus the main beam can promote the heat dissipation of radiator.

### Heat dissipation of the whole structure



### Tool-free maintenance

Chips Powered by

