

SPECIFICATION — Hawk

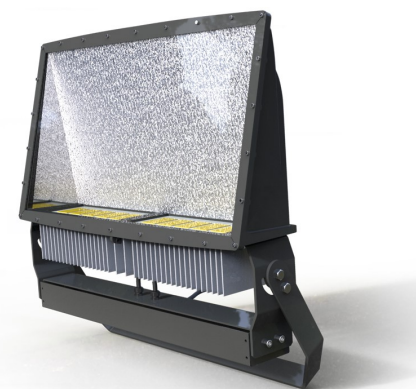
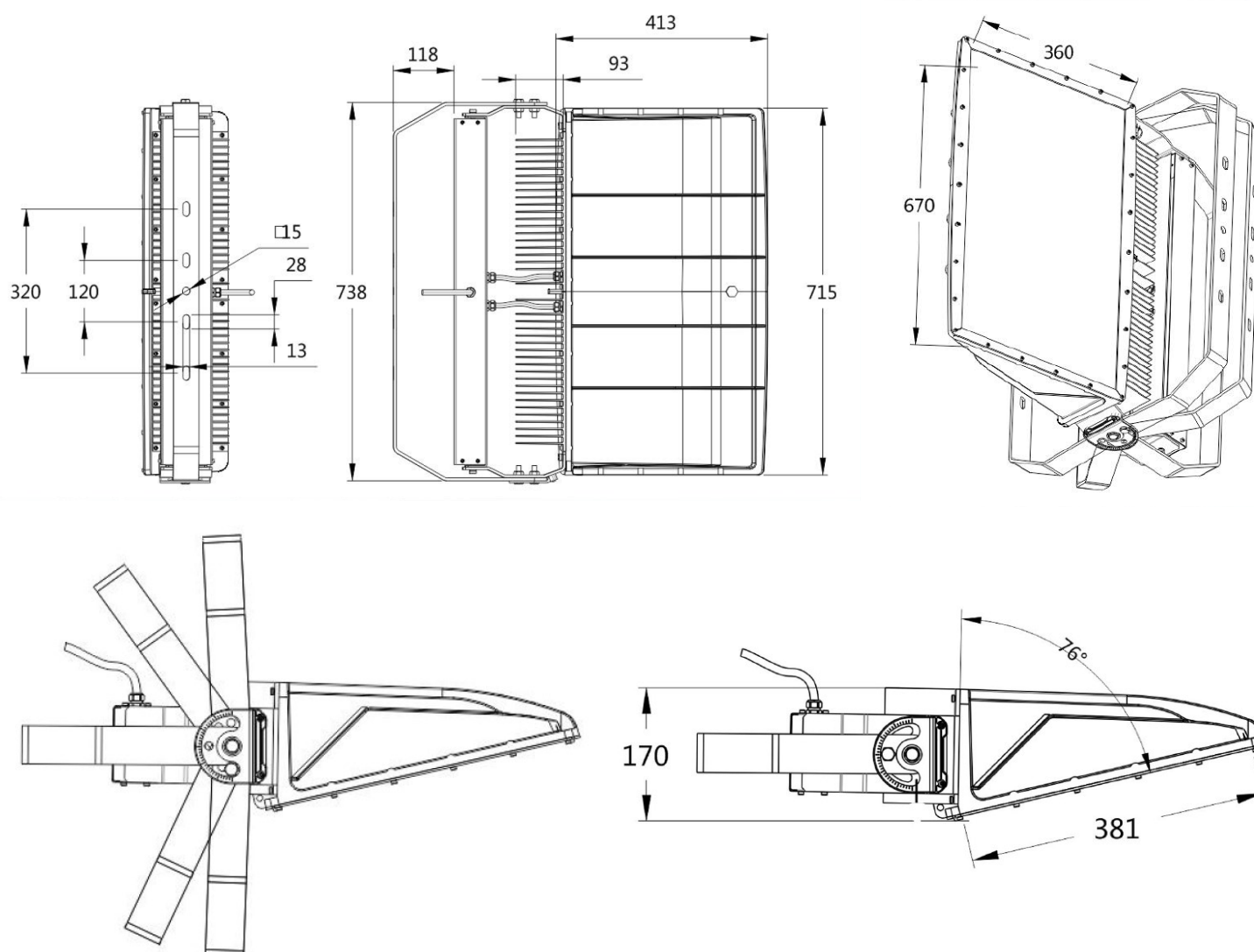
APPLICATION

It is ideal for all High mast, Sport field, Tennis Court, Airport, Wall wash, Race track and other applications.

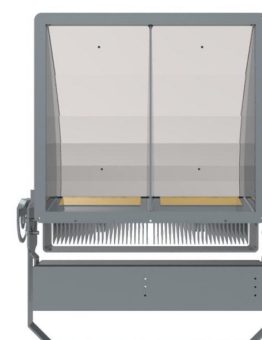
PARAMETERS

LED Chip	Nichia or Lumileds	Housing and Body	Aluminum Alloy
Protection class	IP66 (LED Housing)	Protection class	IP67 (Meanwell Driver)
Single color	3000K,4000K,5000K,6000K	System power	300-800W
CRI	Ra80	Power efficiency	91%
Lumen efficiency	130 lm/w @ 5000K	LED numbers	1200pcs max
Lifetime	More than 50000 hrs	Operating environment	-40°C~+50 °C
Storage environment	-40°C~+70 °C, 10%~90%RH	Weight **	18 ~ 32 KG
Supply voltage	AC90-305V or AC180-528V	Surge voltage	20KV

DIMENSIONS



300W & 400W LUMILEDS:

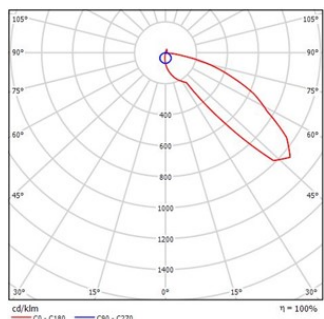


System Power (W)	CCT (K)	Nichia LED Chip		Lumileds LED Chip	
		Luminous Efficacy (lm/W)	Luminous Flux (lm)	Luminous Efficacy (lm/W)	Luminous Flux (lm)
300	5000	130	39000	125	37500
400	5000	130	52000	125	50000
500	5000	130	65000	125	62500
600	5000	130	78000	125	75000
800	5000	130	104000	125	100000

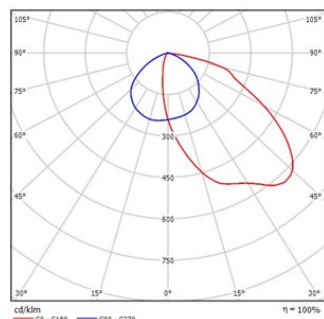


HLG Series
HVG Series
ELG Series

DISTRIBUTION



FN




FW

* Wired front cover guard available on special request

NOTE:

- 1) 300W & 400W LUMILEDS ONLY SUPPORT "FN" DISTRIBUTION
- 2) 300W & 400W NICHIA WIDE BODY SUPPORT BOTH "FN" & "FW"

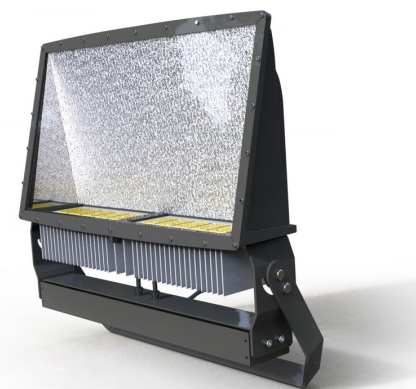
DIMENSION & WEIGHT

Photo	Type	Power (W)	Distribution	Package Size	Net Weight	Gross Weight
	Mid (Lumileds)	300	FN	80*60*25cm	17.30KG	20.10KG
		400	FN	80*60*25cm	17.50KG	20.80KG
	Large (Lumileds/ Nichia)	300	FN/FW	80*80*25cm	27.80KG	31.75KG
		400	FN/FW	80*80*25cm	28.30KG	32.25KG
		500	FN/FW	80*80*25cm	28.90KG	32.85KG
		600	FN/FW	80*80*25cm	28.90KG	32.85KG
		800	FN/FW	90*80*25cm	31.10KG	35.30KG

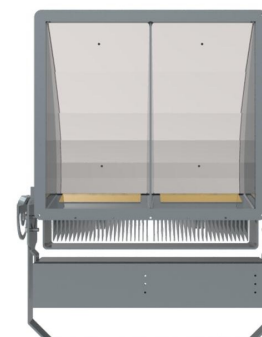
** Mid using Meanwell ELG Series Single Phase Driver

ORDERING INFORMATION


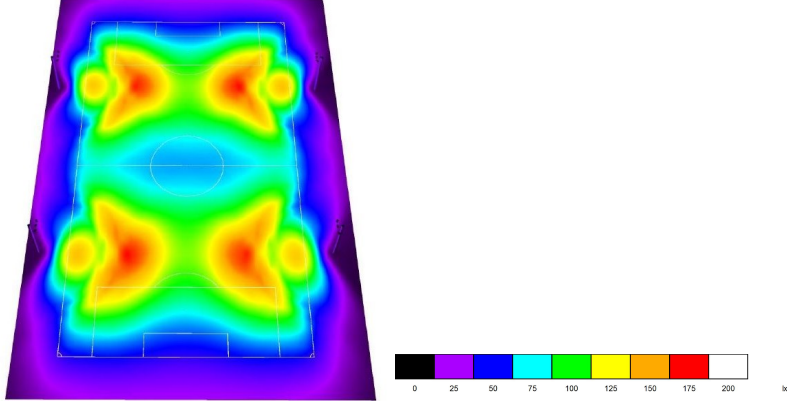

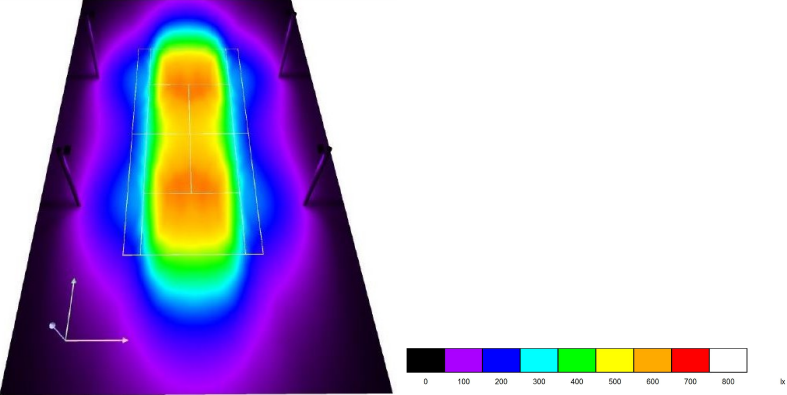
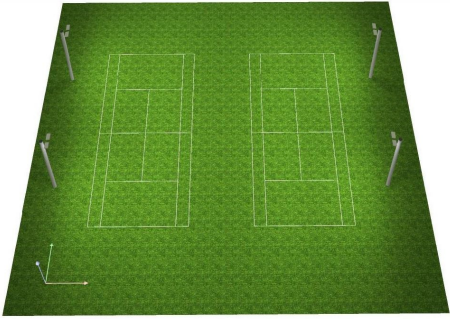
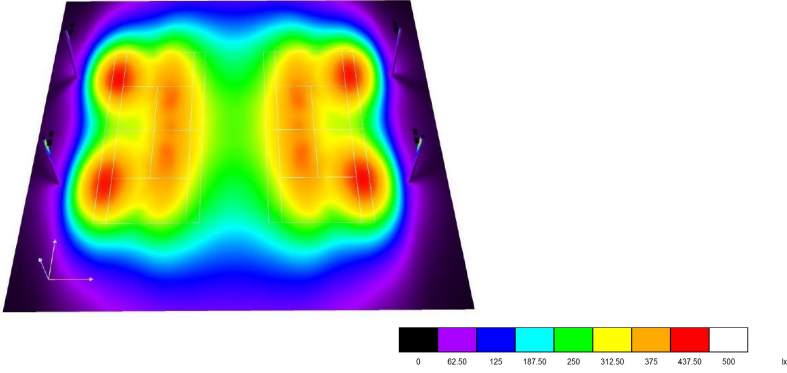

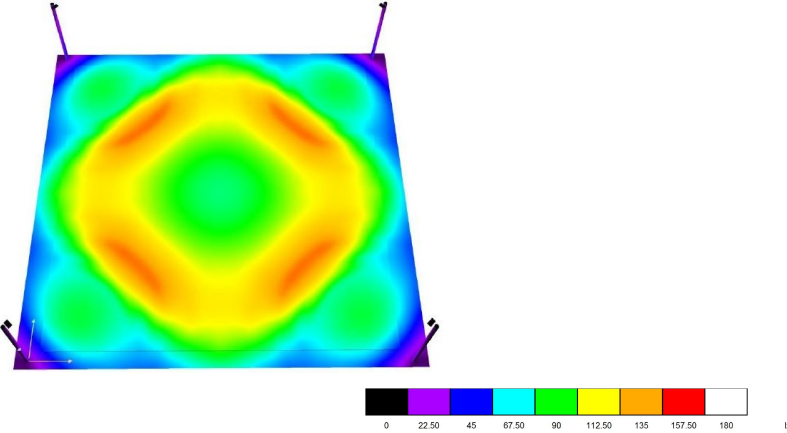
Product	Power (W)	Phase	Chips	CCT	Distribution	Color	Type
HWK=Nikon Hawk	300	1P=Single Phase (240VAC) - HLG	N=Nichia L=Lumileds	30=3000K	FN=Front Narrow FW=Front Wide	SL=Silvery BK=Black DG=Dark Grey	HM=Mid HL=Large
	400			40=4000K			
	500			50=5000K			
	600	60=6000K					
	800	3P=3 Phase (415VAC) - HVG					



300W & 400W LUMILEDS:



SIMULATION REFERENCE

<p>Soccer Field</p>	<p>Layout: 4 poles Height: 12m Luminaires: 12*800W FN AVG Lux: 102 lux U1 : 0.5 U2 : 0.3</p>		
<p>Tennis Court</p>	<p>Single Court Layout: 4 poles Height: 8m Luminaires: 4*600W FN AVG Lux: 490 lux U1 : 0.66 U2 : 0.51 <i>*Illuminance on Principal Playing Area (PPA)</i></p>		
<p>Tennis Court</p>	<p>Twin Court Layout: 4 poles Height: 8m Luminaires: 4*600W FN 4*600W FW AVG Lux: 368 lux U1 : 0.6 U2 : 0.44 <i>*Illuminance on Principal Playing Area (PPA)</i></p>		
<p>Bowling Green</p>	<p>Layout: 4 poles Height: 10m Luminaires: 4*600W FN AVG Lux: 102 lux U1 : 0.6 U2 : 0.43</p>		

**NOTE: The simulations are for reference only. For actual project simulation calculations and more sports applications, please contact our local representatives.